

CURVE TABLE - CORYDON AVENUE				
CURVE #	RADIUS	LENGTH	START POINT (N.E)	END POINT (N.E)
C1	137.50	145.825	(5524992.015, 631129.202)	(5525058.605, 631251.311)
C2	140.00	74.210	(5525105.632, 631279.582)	(5525156.399, 631332.517)

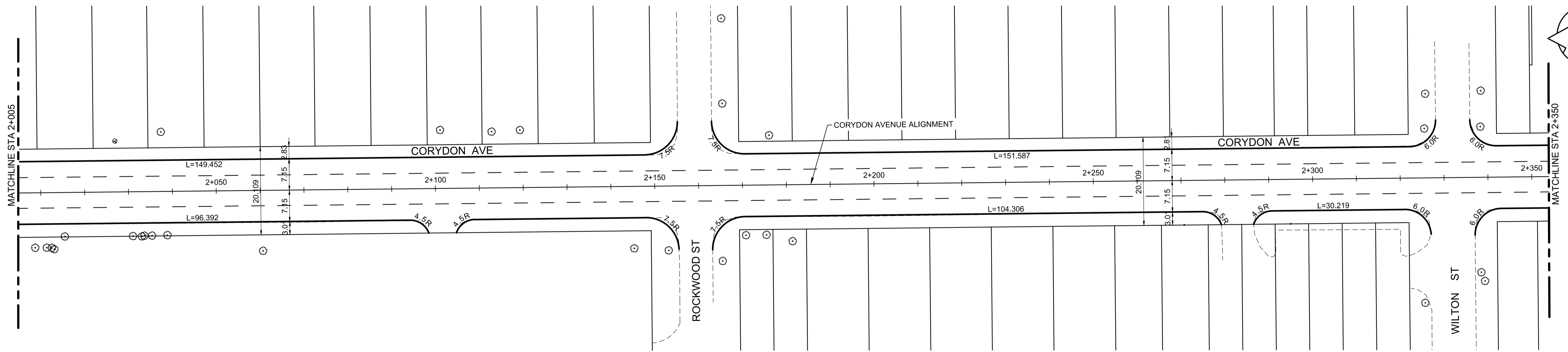
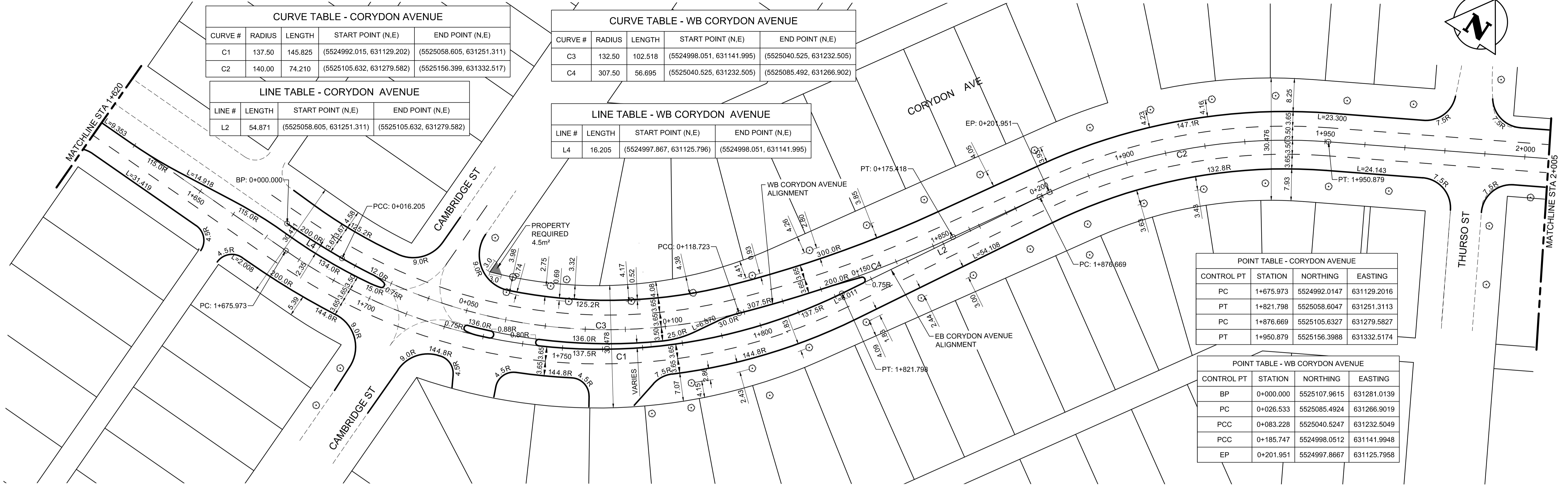
CURVE TABLE - WB CORYDON AVENUE				
CURVE #	RADIUS	LENGTH	START POINT (N.E)	END POINT (N.E)
C3	132.50	102.518	(5524998.051, 631141.995)	(5525040.525, 631232.505)
C4	307.50	56.695	(5525040.525, 631232.505)	(5525085.492, 631266.902)

LINE TABLE - CORYDON AVENUE			
LINE #	LENGTH	START POINT (N.E)	END POINT (N.E)
L2	54.871	(5525058.605, 631251.311)	(5525105.632, 631279.582)

LINE TABLE - WB CORYDON AVENUE			
LINE #	LENGTH	START POINT (N.E)	END POINT (N.E)
L4	16.205	(5524997.867, 631125.796)	(5524998.051, 631141.995)

POINT TABLE - CORYDON AVENUE			
CONTROL PT	STATION	NORTHING	EASTING
PC	1+675.973	5524992.0147	631129.2016
PT	1+821.798	5525058.6047	631251.3113
PC	1+876.669	5525105.6327	631279.5827
PT	1+950.879	5525156.3988	631332.5174

POINT TABLE - WB CORYDON AVENUE			
CONTROL PT	STATION	NORTHING	EASTING
BP	0+000.000	5525107.9615	631281.0139
PC	0+026.533	5525085.4924	631266.9019
PCC	0+083.228	5525040.5247	631232.5049
PCC	0+185.747	5524998.0512	631141.9948
EP	0+201.951	5524997.8667	631125.7958



**WARNING**

IF POWER EQUIPMENT OR EXPLOSIVES ARE TO BE USED FOR EXCAVATION ON THIS PROJECT THE CONTRACTOR MUST:  
 1) NOTIFY THE GAS COMPANY OF THE PROPOSED LOCATION OF EXCAVATION.  
 2) TAKE PRECAUTION TO AVOID DAMAGE TO GAS COMPANY INSTALLATIONS.  
 SEE PROVINCIAL REGULATION 140/92 FOR DETAILS

**METRIC**

WHOLE NUMBERS INDICATE MILLIMETRES  
 DECIMALIZED NUMBERS INDICATE METRES

EXISTING	PROPOSED	EXISTING	PROPOSED	EXISTING	PROPOSED	LEGEND-PROFILE	PROPOSED

**LOCATION APPROVED UNDERGROUND STRUCTURES**

SUPV. U/G STRUCTURES COMMITTEE DATE  
 NOTE:  
 LOCATION OF UNDERGROUND STRUCTURES AS SHOWN ARE BASED ON THE BEST INFORMATION AVAILABLE BUT NO GUARANTEE IS GIVEN THAT ALL EXISTING UTILITIES ARE SHOWN OR THAT THE GIVEN LOCATIONS ARE EXACT. CONFIRMATION OF EXISTENCE AND EXACT LOCATION OF ALL SERVICES MUST BE OBTAINED FROM THE INDIVIDUAL UTILITIES BEFORE PROCEEDING WITH CONSTRUCTION.

NO.	REVISIONS	DATE	BY
0	ISSUED FOR TENDER	20.02.14	S.R.S.

**Stantec**  
 500 - 311 Portage Avenue, Winnipeg MB Canada  
 www.stantec.com

DESIGNED BY: D.C.P.	CHECKED BY: R.K.H.
DRAWN BY: R.S.	APPROVED BY: S.R.S.
HOR. SCALE: 1:500	RELEASED FOR CONSTRUCTION:
VERTICAL:	DATE:

ENGINEER'S SEAL  
**PRELIMINARY DRAWING**  
 NOT TO BE USED FOR CONSTRUCTION  
 CONSULTANT DRAWING NO. C-102

**THE CITY OF WINNIPEG**  
 PUBLIC WORKS DEPARTMENT  
 ENGINEERING DIVISION  
 2019-2023 STAFFORD/TAYLOR/CORYDON  
 TENDER 1  
 CORYDON AVENUE  
 FROM STA 1+620 TO STA 2+350  
 HORIZONTAL GEOMETRY

SHEET 4 OF 55  
 CAD FILE DRAWING NUMBER 08020c-101-932.dwg  
 CITY DRAWING NUMBER P-3524-04